

RexPro™ Engineered Steel Chain

THE SAFER, FASTER, EASIER
BUCKET ELEVATOR CHAIN

RexPro Engineered Steel Chain addresses longstanding industry concerns, such as safety and maximizing uptime. The new chain design allows users to assemble bucket elevator chain safer, faster, and easier by using only an impact driver while maintaining the industry-leading interference fit Rex™ chain is known for. By reducing the need for heavy tools, it allows for faster and easier assembly – reducing the exposure to dangerous work environments by up to 50% or more.



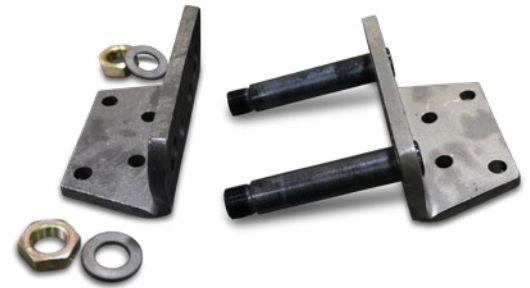
SAFER



FASTER



EASIER



RexPro Engineered Steel Chain

MAXIMUM STRENGTH & EXTENDED LIFE

The use of heat-treating and shot peening increases the overall strength of the chain so that it can stand up to harsh application environments. A longer fatigue life allows for more cycles under load, increasing uptime and reducing total cost of ownership. The combination of longer fatigue life and precise heat-treating of components creates more predictable chain wear, and therefore predictable chain life, for easier outage planning.

RexPro field connection builds on these Rex chain features and makes it even easier to achieve a factory fit at connection points, which is a key factor in ensuring the entire chain performs optimally.

PINS & BUSHINGS

- Through-hardened for maximum strength and durability
- Deep case induction hardened pins for longer wear life
- Deep case carburized bushings for longer wear life

SIDEBARS

- Through-hardened for maximum strength and ductility
- Shot peening and precise interference fit of pins and bushings extend fatigue life

ROLLERS (where applicable)

- Through-hardened for maximum strength and durability
- Deep case carburized for longer wear life

FIELD ASSEMBLY

- Assemble with only an impact driver - no special pin pusher tools required
- Achieve factory fit at connection points

Regal Rexnord has been a leader in industrial chain design and manufacturing for over a century. We are continuously working to meet the highest industry standards and satisfy our customers' specific needs. With our team of expert engineers, we can find the right chain for your application.

INDUSTRIES SERVED

- Cement
- Aggregate
- Fertilizer
- Asphalt
- Mining
- Pulp & Paper
- Others

KEY APPLICATION

Bucket Elevators

BENEFITS

Safer

- Easy-to-use installation tool
- Less exposure to safety risks

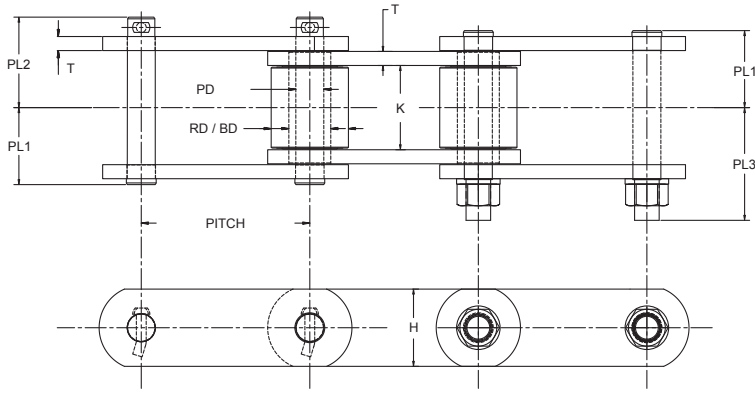
Faster

- 1/2 to 1/3 the install time of a pin pusher

Easier

- Only requires a 25lb tool
- Intuitive install

Rexpro™ Engineered Steel Chain



RexPro Engineered Steel Chain — Description and Attributes *All dimensions are in inches unless otherwise stated.*

RexPro Chain Series	Pitch Length	Sidebars			Pins				Roller	Bushing	Assembly		Sprocket Unit No.
		Distance Between Sidebars	Thickness	Height	Diameter	Standard Pin Length			Outside Diameter	Outside Diameter	Rec. Drive Socket	Rec. Driver Torque Capacity (ft-lb)	
						K	T	H					
ER856ML	6	3	0.5	2.5	1	2.85	3.26	3.4	NA	1.75	1-5/16	750	856
ER857ML	6	3	0.5	3.25	1	3.187	2.89	3.063	NA	1.75	1-5/16	750	856
SJM857ML	6	3	0.5	3.25	1	3.08	3.38	3.6	NA	1.75	1-5/16	750	856
ER859ML	6	3.75	0.63	4	1.25	3.56	3.88	4.17	NA	2.38	1-5/16	750	859
SJM859ML	6	3.69	0.63	4	1.25	3.81	4.03	4.14	NA	2.38	1-5/16	750	859
ER956ML	6	2.95	0.5	3	1	2.89	3.19	3.36	NA	1.75	1-5/16	750	856
SJM956ML	6	2.88	0.5	3	1	3.08	3.38	3.17	NA	1.75	1-5/16	750	956
ER958ML	6	3	0.63	3.25	1.13	2.85	3.22	3.55	NA	2	1-1/2	750	958
SJM958ML	6	2.94	0.5	3.25	1.13	3.12	3.49	3.84	NA	2	1-1/2	750	958
ER979ML	6	3.69	0.62	4	1.37	3.49	3.83	4.29	NA	2.5	1-1/2	750	979
ER864ML	7	3.75	0.63	4	1.25	3.56	3.88	4.17	NA	2.38	1-5/16	750	864
SJM864ML	7	3.69	0.63	4	1.25	3.56	4.03	4.14	NA	2.38	1-5/16	750	864
ER984ML	7	3.75	0.62	4	1.38	3.44	3.85	4.34	NA	2.5	1-1/2	750	984
SJM984ML	7	3.69	0.62	4	1.38	3.69	4.02	4.48	NA	2.5	1-1/2	750	984
ER7984ML	7	3.69	0.62	4	1.38	3.44	3.85	4.3	3	2	1-1/2	750	984
ER2866ML	7	4.44	0.62	4	1.37	3.84	4.19	4.65	NA	2.37	1-1/2	750	2866
R4004ML	9	2.63	0.5	2.63	1	2.58	2.97	3.32	3	1.5	1-5/16	750	4004
R4065ML	9	3.06	0.63	3.06	1.25	3.1	3.45	3.95	4.25	2	1-5/16	750	4065
R4037ML	9	3.17	0.62	4	1.5	3.24	3.56	4.05	4.5	2.12	1-7/8	750	4037
R3250ML	9	3.435	0.63	4	1.62	3.38	3.67	4.19	3.5	2.38	1-7/8	750	3250
2864ML	9	2.7	0.5	3.5	1.25	2.69	3.13	3.35	3.5	2	1-5/16	750	864
R4010ML	12	3.25	0.63	4	1.5	3.23	3.57	3.72	4.5	2.12	1-7/8	750	4010
R2296ML	18	2.44	0.375	2.5	0.75	2.2	2.34	2.84	NA	2	15/16	750	2296

Assembly: We recommend assembly with an impact driver, reference the table for recommended socket size and driver torque

Pins: All pins for the chains in this table are through hardened and carburized

Bushings: All bushings for chains in this table are deep case carburized

Rollers: All rollers for applicable chains in this table are carburized

Sealed Joint Chains (SJM): If utilizing ACS style buckets with your chain please confirm the PL1 and PL3 dimension to confirm the fit of the bucket

Chain Configuration: Most standard attachments are available, if attachment spacing is not every second pitch (EV2) contact Regal Rexnord for availability



Regal Rexnord

Contact us: rexnord.com/contact

regalrexnord.com/rexpro

The proper selection and application of products and components, including assuring that the product is safe for its intended use, are the responsibility of the customer. To view our Application Considerations, please visit <https://www.regalrexnord.com/Application-Considerations>.

To view our Standard Terms and Conditions of Sale, please visit <https://www.regalrexnord.com/Terms-and-Conditions-of-Sale>

"Regal Rexnord" is not indicative of legal entity. Refer to product purchase documentation for the applicable legal entity.

Regal Rexnord, Rex and RexPro are trademarks of Regal Rexnord Corporation or one of its affiliated companies.

© 2022, 2025 Regal Rexnord Corporation, All Rights Reserved. MCF-10497-RX-EN-US 01/25

