

Autogard Torque Limiter – XG Series

IMPERIAL

XG SERIES – THE MECHANICAL FUSE FOR EXTRUDERS

Twin screw extruders and compounding machines require the very best torque overload protection. The Rexnord™ Autogard™ XG Series offers features with the specific aim of protecting extruders from damage caused by unexpected torque spikes.

Features:

- Instantaneous separation of damaging inertias over a pre-set torque level
- Free running after torque overload
- Manual reset without the need of special tooling or replacement parts
- Easy to adjust torque setting on-site, and possible to tamper-proof the setting
- Fast and easy to disconnect motor and gearbox by removing the Wrapflex™ element for machine maintenance
- Drop-out options available on every size
- Disengagement sensors available



Autogard Torque Limiter – XG Series

XG SERIES: SIZE 1 & 2

Type M

- Shortest possible overall length

Order format: Model & Size - Type / S1 bore / S2 bore / Spring qty / A Torque setting

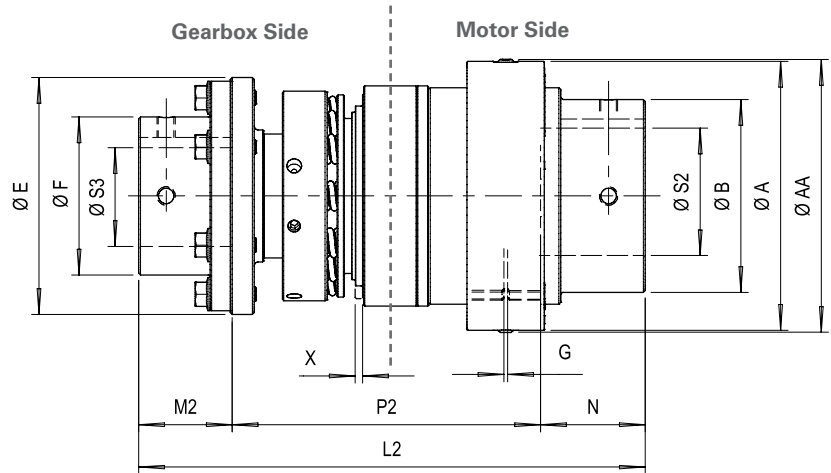
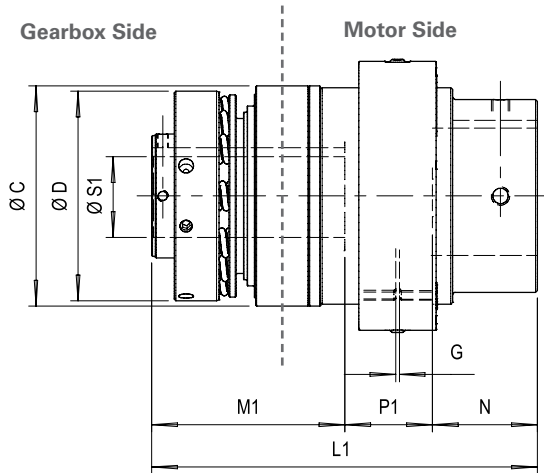
For example: XG1-M / S1-1.375 / S2-2.625 / 8 / 2000

Type R

- Allows for large motor shaft sizes
- Drop-out the torque limiting coupling without moving motor or gearbox

Order format: Model & Size - Type / S2 bore / S3 bore / Spring qty / Torque setting

For example: XG1-R / S3-2.000 / S2-2.625 / 8 / 2000



Size	Torque range (lb-in)				S1 ① Bore max in	S2 ① Bore max in	S3 ① Bore max in	Max. speed rpm	Type M		Type R		Wrapflex Coupling Size	Max. Misalignment		
	2 Springs	4 Springs	8 Springs	12 Springs					Weight lb	Inertia lb-in ²	Weight lb	Inertia lb-in ²		Axial ± in	Parallel in	Angular degrees
1	354 - 708	708 - 1420	1420 - 2920	2120 - 4430	1.75	2.875	2.375	4500	26.5	68.3	35.5	88.8	30R	0.01	0.08	1
2	1420 - 2830	2830 - 5660	5660 - 10600	8500 - 15900	2.5	4.125	3.375	3000	82.0	513	110	649	50R	0.02	0.08	1

Size	ø AA in	ø A in	ø B in	Type M					Type R					N in	G in	X - Stroke on trip in
				ø C in	ø D in	L1 in	M1 in	P1 in	ø E in	ø F in	L2 in	M2 in	P2 in			
1	6.02	5.77	4.13	4.72	4.49	8.26	4.13	1.88	5.08	3.39	10.9	2.01	6.61	2.24	0.079	0.142 - 0.185
2	9.41	9.09	7.01	6.46	6.46	11	5.43	2.55	6.54	4.84	15.6	3.74	8.85	2.99	0.197	0.193 - 0.256

① Unless otherwise specified, bores will be manufactured with H7 tolerances

② Weight and inertia values are for unbored torque limiters



Regal Rexnord

Contact us: rexnord.com/contact

regalrexnord.com

The proper selection and application of products and components, including assuring that the product is safe for its intended use, are the responsibility of the customer. To view our Application Considerations, please visit <https://www.regalrexnord.com/Application-Considerations>.

To view our Standard Terms and Conditions of Sale, please visit <https://www.regalrexnord.com/Terms-and-Conditions-of-Sale>

