



PACTITAN[®]

ALL OTHER BELTS KNEEL BEFORE PACTITAN!



CAMBRIDGE
ENGINEERED SOLUTIONS



PACTITAN

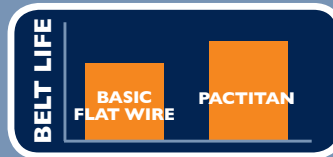
PACTITAN IS THE STRONGEST, MOST LONG-LASTING FLAT WIRE PRODUCT AVAILABLE.

ALL OTHER BELTS KNEEL BEFORE PACTITAN!



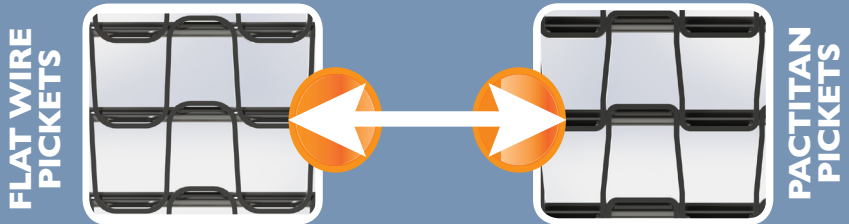
TITAN

- noun \ˈtī-tən\
1. Primeval deities in Greek mythology known for their immense strength and stamina
 2. One that stands out for greatness and achievement

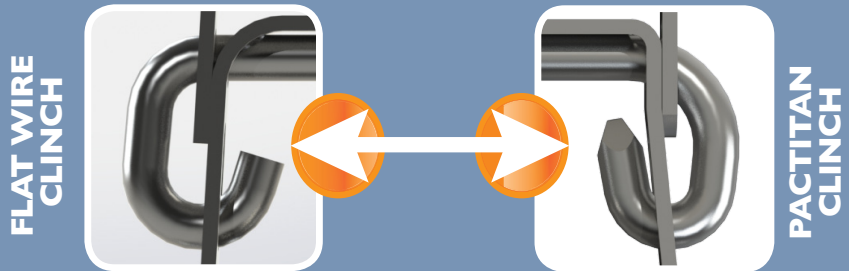


PacTitan lasts up to **30% longer** than other flat wire products.

The proprietary PacTitan manufacturing process results in flatter pickets with better nesting between the picket and the rod. This reduces belt elongation, improves tracking, and contributes to longer belt life.



Fully clinched edges provide a superior edge finish that prevents the belt from necking down or hanging up on the side coveror.

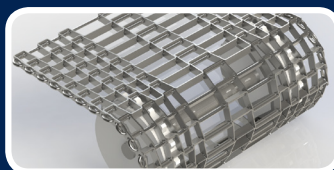


PacTitan DL provides the option of a flat wire belt with dedicated sprocket lanes. The better fit between the sprocket and picket increases strength and reduces distortion under load. The additional open area also provides better airflow, cleanability, and reduced weight and energy consumption.

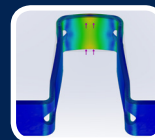
APPLICATIONS

- ANNEALING
- BAKING
- COATING
- COLLECTION
- COOLING
- CURING
- DEWATERING
- DRYING
- FILLING
- FORMING
- FOUNDRY
- FREEZING
- GLASS ANNEALING
- OVENS
- PACKAGING
- PASTEURIZERS
- TRANSFERS
- WASHING

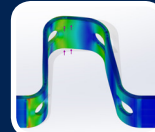
SIMULATED STRESS ON FLAT WIRE PICKETS FROM A SPROCKET TOOTH EXUDING 500 LBS. OF FORCE:



PacTitan DL with dedicated sprocket lanes



PacTitan DL pickets engage with the sprocket directly in the center. This helps maintain picket shape and strength, contributing to longer belt life.



Standard flat wire pickets often engage with the sprocket slightly off-center. This can deform the picket and negatively affect belt life.

PACTITAN

TECHNICAL SPECIFICATIONS

PACTITAN TECHNICAL SPECIFICATIONS

Standard Duty

1 x 1	(25.4 x 25.4 mm)
1/2 x 1	(12.7 x 25.4 mm)
Modified 1/2 x 1	(Modified 12.7 x 25.4 mm)

Heavy Duty

1 x 1	(25.4 x 25.4 mm)
1/2 x 1	(12.7 x 25.4 mm)

Can Duty

1 x 1	(25.4 x 25.4 mm)
-------	------------------

Belt Width

(SD & CD): 6" to 252"	(152 to 6400 mm)
(HD): 6" to 192"	(152 to 4876 mm)

Materials: WRSS, HCS, Galvanized, or T316 SS

PACTITAN DL (DRIVE LANE) TECHNICAL SPECIFICATIONS

1" Pitch (Nominal) (25.4 mm)

Available in:

Standard Duty, Heavy Duty or Can Duty

Lateral openings determined by number of drive lanes & belt width

Lateral

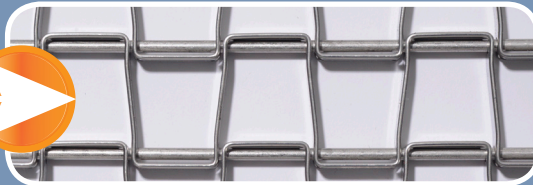
Opening Range: 1/2" to 3" (12.7 to 76.2 mm)

Belt Width

(SD & CD): 8" to 252"	(203 to 6400 mm)
(HD): 8" to 192"	(203 to 4876 mm)

Materials: WRSS, HCS, Galvanized, or T316 SS

PacTitan Mesh Pattern



PacTitan DL Mesh Pattern



WIRE & ROD SPECIFICATIONS (PACTITAN & PACTITAN DL):

	Flat Strip		Rod Size	
			Gauge	mm
Standard Duty (SD)	3/8" x .046"	9.5 x 1.2 mm	11	3.06
Heavy Duty (HD)	1/2" x .062"	12.9 x 1.6 mm	6	4.88
Can Duty (CD)	3/8" x .046"	9.5 x 1.2 mm	12	2.68

SPROCKET (PACTITAN & PACTITAN DL):

Sizes	4", 6", 8", 10", 12"	102, 152, 203, 254, 305 mm
Materials	Machined Steel Self-Cleaning Machined Steel Stainless Steel	Cast Iron VSHT Investment Cast UHMW Polyethylene

CAMBRIDGE ENGINEERED SOLUTIONS

877.649.7492 +1.410.901.2660

sales@cambridge-es.com

www.cambridge-es.com

CAMBRIDGE QUICK FACTS

Over 100 years in business

World's largest manufacturer of metal conveyor belts

Manufacturing facilities located in the United States, Mexico, and Brazil

Over 25 engineers and field technicians on staff

24/7/365 customer support

THE CAMBRIDGE APPROACH

There's a reason why "Engineered Solutions" is part of our name: We aren't just another metal belt manufacturer. We are engineers who are always looking for a better way to solve problems. Nothing gives us more satisfaction than helping our customers run their plants more efficiently and profitably.

AT YOUR SERVICE

In addition to designing a belt that is specific to your plant and objectives, we can help you with the following services:

Installation • Conveyor Modifications & Retrofits • Conveyor Evaluations
Conveyor Alignment • Troubleshooting Assistance • Technical Training
Maintenance Program Planning • Consignment Inventory Programs
Plant Surveys & Optimization

CAMBRIDGE ENGINEERED SOLUTIONS

877.649.7492 +1.410.901.2660

sales@cambridge-es.com

www.cambridge-es.com